

AN EXPERT
ALLIANCE FOR
**THE MOST SPECIFIC
SENSITIVITIES**

Designed specifically for veterinary professionals
to better support patient care to achieve
optimum outcomes

CONTENTS

PAGE 3 CLINICAL ALLIANCE

PAGE 4 DIETS INCLUDED

PAGE 5 ROYAL CANIN® MULTIFUNCTION DIETS

- Context & challenge
- Benefits
- Range & product highlights

PAGE 19 ROYAL CANIN® MONOFUNCTION DIETS

PAGE 22 HOW TO ORDER

PAGE 23 VET SERVICES & CLINICAL ALLIANCE



INTRODUCING AN EXCITING NEW COLLABORATION WITH VETERINARY PROFESSIONALS

CLINICAL ALLIANCE ALLOWS US TO GO FURTHER IN SUPPORTING YOU



Nutrition for pets with very specific health needs



Where **veterinary intervention is essential** for diagnosis and follow up



CLINICAL ALLIANCE WILL REINFORCE YOUR PRIMARY ROLE

For the management of cats and dogs with diseases, requiring regular consultations from diagnosis to follow up, to best support your patient's health.

The alliance is rooted in offering a **range of diets that are only available through veterinary professionals** as only you have the right expertise to deliver the right care.

We are committed to supporting you in helping pets get the right level of care and attention they need.



DIETS AVAILABLE WITHIN CLINICAL ALLIANCE

ROYAL CANIN
 MULTIFUNCTION
 SOLUTIONS



ROYAL CANIN
 MONOFUNCTION
 SOLUTIONS



ROYAL CANIN® MULTIFUNCTION DIETS MULTIPLE CONDITIONS, A SINGLE NUTRITIONAL SOLUTION

Many cats and dogs can be affected by more than one condition. That is why we created our **highly palatable and digestible** ROYAL CANIN® Multifunction formulas, to address their multiple nutritional needs.



KEY ROLE OF NUTRITION IN ISSUES MOST SEEN BY VETERINARY PROFESSIONALS

ISSUES SEEN IN VETERINARY CLINIC	FREQUENCY	KEY ROLE OF NUTRITION
URINARY (Urolithiasis)	Approximately 1 in every 5 cats with Feline Lower Urinary Tract Disease (FLUTD) are affected by urolithiasis. ¹ Urolithiasis affects up to 1% of the canine population. ²	RSS technology is used to formulate diets that can effectively dissolve pure struvite uroliths. ³
URINARY (Feline Idiopathic Cystitis [FIC])	Approximately 2/3 of cats with FLUTD experience FIC. ⁴	FIC is associated with an abnormal response to stress. ⁵ Calming nutrients have been shown to reduce a marker of chronic stress in cats. ⁶
DERMATOLOGY (Cutaneous Adverse Food Reaction [cAFR])	A primary reason for consultation. ^{7,8}	In managed AFR, switching the diet to manage other conditions may provoke cutaneous (or gastrointestinal) reactions. ⁹
EXCESSIVE BODYWEIGHT (Overweight or obesity)	Approximately 1 in every 2 cats and dogs seen in veterinary clinics are overweight or have obesity. ¹⁰	An appropriate diet can effectively support weight loss, which improves quality of life. ^{11,12}
RENAL (Chronic Kidney Disease [CKD])	More than 10% of dogs and 30% of cats over 15 years of age have CKD. ¹³	Recommending a renal diet is the standard of care for cats and dogs with CKD. ¹⁴
GASTROINTESTINAL	In a recent survey, 25% of cat and dog owners reported observing gastrointestinal (GI) signs in their pets within the last 12 months. ¹⁵	2/3 of chronic diarrhoea cases can be managed with diet. ¹⁶

References:

- Kruger JM, et al. Clinical evaluation of cats with lower urinary tract disease. J Am Vet Med Assoc 1991; 199: 211-216
- Hesse, A. Canine urolithiasis: epidemiology and analysis of urinary calculi. J Small Anim Pract 1990;31:599-604
- Houston DM et al. A diet with a struvite relative supersaturation less than 1 is effective in dissolving struvite stones in vivo. Br J Nutr 2011; 106: 590-592
- Buffington CA, et al. Clinical evaluation of cats with nonobstructive urinary tract diseases. J Am Vet Med Assoc 1997;210:46-50
- Buffington CA. Idiopathic cystitis in domestic cats-beyond the lower urinary tract. J Vet Intern Med. 2011;25(4):784-796. doi:10.1111/j.1939-1676.2011.0732.x
- Miyaji K, Kato M, Ohtani N, Ohta M. Experimental Verification of the Effects on Normal Domestic Cats by Feeding Prescription Diet for Decreasing Stress. J Appl Anim Welf Sci. 2015; 18(4): 355-362. doi:10.1080/0710888705.2015.1005301
- Hill PB et al. Survey of the prevalence, diagnosis, and treatment of dermatological conditions in small animals in general practice. Vet Rec 2004; 158: 533-539
- Nielsen TD et al. Survey of the UK veterinary profession: common species and conditions nominated by veterinarians in practice. Vet Rec 2014; 174: 324

- Gaschen FP, Merchant SR. Adverse food reactions in dogs and cats. Vet Clin North Am Small Anim Pract 2011;41: 361-379
- Association for Pet Obesity Prevention survey, 2013. www.petobesityprevention.com
- Flanagan, J., Bissot, T., Hours, M. A., Moreno, B., Feugier, A., & German, A. J. (2017). Success of a weight loss plan for overweight dogs: The results of an international weight loss study. PLoS one, 12(9), e0184199. https://doi.org/10.1371/journal.pone.0184199
- Flanagan, J., Bissot, T., Hours, M. A., Moreno, B., & German, A. J. (2018). An international multi-centre cohort study of weight loss in overweight cats: Differences in outcome in different geographical locations. PLoS one, 13(7), e0200414. https://doi.org/10.1371/journal.pone.0200414
- Polzin DJ. Chronic kidney disease. In Bartges J, Polzin DJ, editors. Nephrology and urology of small animals. Ames (IA): Wiley-Blackwell, 2011:433-471
- Polzin DJ. Chronic kidney disease in small animals. Vet Clin North Am Small Anim Pract. 2011 Jan;41(1):15-30
- 2020 PET OWNER CATEGORY UNDERSTANDING: Use of Vet services, their journey, and incidence of different diseases/conditions. June 2020
- Allenspach, K., Culverwell, C. and Chan, D. (2016) 'Long-term outcome in dogs with chronic enteropathies: 203 cases', Veterinary Record, 178(15), 368

DIAGNOSIS OF PETS WITH CONCURRENT CONDITIONS ARE COMMON IN VETERINARY PRACTICE

3/4
VETERINARIANS

confirm a diet that supports multiple conditions and comorbidities would be useful.¹⁷

Up to 25%

of pets suffer from multiple health conditions

Cats and dogs can have more than one health need; nutrition can play a role in the management of multiple health conditions.¹⁸

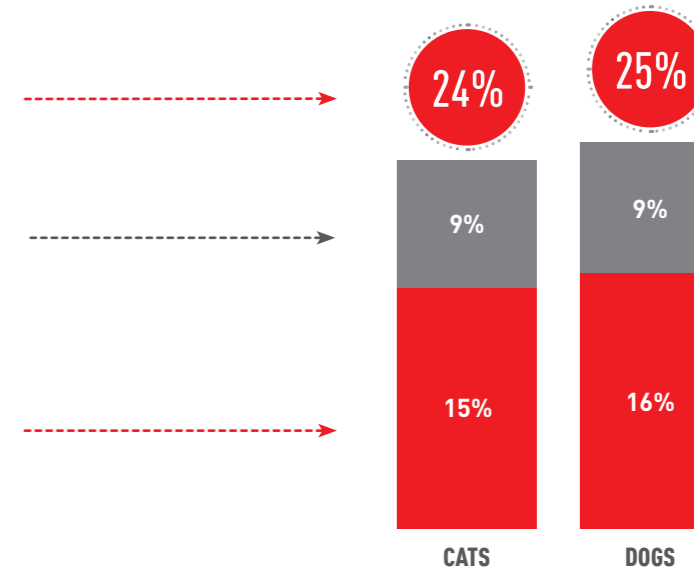


MORE DETAILS:

Total share of pets treated for a specific disease (potentially), suffering from multiple conditions or sensitivities.

Suspected but not confirmed to have multiple conditions or sensitivities.

Diagnosed with multiple diseases, conditions or sensitivities.



CATS

DOGS

Europe – France & UK (n=242)

References:

- Internal data – 2013
- Data on file. Aug-Oct 2013, France/UK/US, 370 veterinarians; internal study

BECAUSE YOU SHOULDN'T HAVE TO CHOOSE WHICH CONDITION TO SUPPORT THROUGH GOOD NUTRITION

ROYAL CANIN®
MULTIFUNCTION

The Multifunction range has been developed with **veterinarians for veterinary professionals**. With these diets you can offer your clients precise nutrition for their pets, whose multiple health needs require advanced nutritional support.



Together, we can better support patients with multiple conditions or sensitivities.

BENEFITS FOR EVERYONE

Nutritional precision to support pets with multiple needs

- Highly digestible diets with excellent palatability.
- Nutritionally balanced for long-term management of chronic conditions.

A complete and balanced solution pet owners will find easy to use

- Easily fits into their daily feeding routine.
- Improved compliance to your recommendation.^{19,20}
- Reassurance they are feeding their pet a precise diet that meets their nutritional needs.



A single, efficient way to save you from having to choose between diets

- Optimal nutritional management with appropriate solutions for your patients.
- No need to compromise when there's more than one condition to manage.

ALL ROYAL CANIN® MULTIFUNCTION DIETS ARE COMPLIANT WITH PARNUTS

WHAT ARE PARNUTS?

PARNUTS products (foods intended for PARTICULAR NUTRITIONAL PURPOSES) are a distinct category of specially formulated pet foods designed for the nutritional management of pets with metabolic issues.

PARNUTS are beneficial to veterinarians because they provide the guarantee of a specialised and targeted approach to nutrition that can help support the health and wellbeing of their patients.

ROYAL CANIN® MULTIFUNCTION DIETS AND MIXED FEEDING

For the best results, it is not advised to mix feed ROYAL CANIN® Multifunction diets with other wet or dry diets, or other types of food; mix feeding with other diets will dilute the benefits of the diet. However, where a wet version of a Multifunction diet is available, this is suitable for mixed feeding.



UNIQUE NUTRITIONAL SOLUTIONS FOR COMMONLY DIAGNOSED CONDITIONS

CANINE FORMULAS



FELINE FORMULAS



ROYAL CANIN®

URINARY S/O® + HYPOALLERGENIC

URINARY S/O® + HYPOALLERGENIC dry is a complete dietetic food for dogs formulated for the dissolution of struvite stones, reduce the risk of struvite stone recurrence, and for the management of ingredient and nutrient intolerances.



DIET RECOMMENDED FOR:

Urinary disorders:

- Struvite uroliths: dissolution and management of recurrence
- Calcium oxalate uroliths: management of recurrence

+ Dermatological/GI conditions:

- Adverse Food Reactions (AFR)
- Canine Atopic Dermatitis (CAD)
- Chronic diarrhoea
- Inflammatory Bowel Disease (IBD)
- Exocrine Pancreatic Insufficiency (EPI)

KEY INSIGHTS:

Around 3% of the dog population will be affected by urinary issues²¹

Vets claim around 25% of their dog consultations concern dermatology or allergy issues²²

URINARY S/O® + SATIETY

URINARY S/O® + SATIETY dry is a complete dietetic food for dogs, formulated for the dissolution of struvite stones, reduce the risk of struvite stone recurrence and for the reduction of excessive body weight.



URINE DILUTION
Urine dilution makes the urine less liable to form crystals.

LOW RSS
Helps lower the concentration of ions contributing to crystal formation.

HIGH PROTEIN
A high protein content helps maintain muscle mass throughout the weight loss period.

SATIETOGENIC EFFECT
Formulated with a special blend of fibres to promote satiety and reduce spontaneous consumption of food.

Available in 3.5 kg and 9 kg bags

DIET RECOMMENDED FOR:

Urinary disorders:

- Struvite uroliths: dissolution and management of recurrence
- Calcium oxalate uroliths: management of recurrence
- Bacterial cystitis: management of secondary struvite crystalluria (in association with adequate antibiotic therapy)
- + **Weight management:**
- Overweight/obesity
- Stabilised diabetes mellitus with overweight/obesity
- Hyperlipidaemia with overweight/obesity

KEY INSIGHTS:

Around 3% of the dog population will be affected by urinary issues²¹

Approximately 1 out of 2 cats and dogs are considered to be overweight or have obesity¹⁰

References:
10. Association for Pet Obesity Prevention survey, 2022. www.petobesityprevention.com
21. Internal 2021 Global Pet Population Estimation

RENAL + HYPOALLERGENIC

RENAL + HYPOALLERGENIC dry is a complete dietetic food for dogs formulated for the support of renal function in case of chronic renal insufficiency and for the management of ingredient and nutrient intolerances.



RENAL SUPPORT
Formulated with low phosphorus and moderate protein of high quality to support renal function.

ADAPTED ENERGY
Adapted energy content to reduce meal volume and help compensate for a decreased appetite.

HYDROLYSED PROTEIN
Hydrolysed protein with low molecular weight to ensure the food is hypoallergenic.

SKIN BARRIER
Formulated to support the skin's natural protective barrier for optimal skin health.

Available in 4 kg and 10 kg bags

DIET RECOMMENDED FOR:

Renal disease:

- Azotaemic Chronic Kidney Disease (IRIS stages 2 to stage 4)
- Chronic Kidney Disease with proteinuria (IRIS stages 1 to 4)
- + **Dermatological/GI conditions:**
- Adverse Food Reactions (AFR)
- Canine Atopic Dermatitis (CAD)
- Chronic diarrhoea
- Inflammatory Bowel Disease (IBD)
- Exocrine Pancreatic Insufficiency (EPI)

Other:

- Management of recurrence of urolithiasis requiring urine alkalinisation (urate and cystine) in dogs with impaired renal function and/or AFR

KEY INSIGHTS:

Vets claim around 25% of their dog consultations concern dermatology or allergy issues²²

References:
22. Kadence Intl: RC bespoke Global report - 'Vet Market quantification': US, Canada, UK, France, Germany, Russia, Japan; 2015

ROYAL CANIN®

GASTROINTESTINAL® LOW FAT + HYPOALLERGENIC

GASTROINTESTINAL® LOW FAT + HYPOALLERGENIC dry is a complete dietetic food for dogs, formulated for the support of lipid metabolism in the case of pancreatitis, hyperlipidaemia and for the management of ingredient and nutrient intolerances.

LOW FAT
For the nutritional management of dogs needing a fat-restricted diet.

DIGESTIVE SUPPORT
A highly digestible formula with balanced fibres, including prebiotics, to support healthy digestion and transit.

FIBRE BALANCE
Limited fibre content to allow provision of maintenance energy levels despite fat restriction.

HYDROLYSED PROTEIN
Highly digestible hydrolysed (soy) protein reducing the risk of food sensitivities that may cause recurrent gastrointestinal signs.

Available in 3 kg and 10 kg bags

DIET RECOMMENDED FOR:

Gastrointestinal/dermatological conditions:

- Inflammatory Bowel Disease (IBD)
- Exocrine Pancreatic Insufficiency (EPI)
- Adverse Food Reactions (AFR) with gastrointestinal signs
- Lymphangiectasia, exudative enteropathy
- Protein-Losing Enteropathy (PLE)
- Acute and chronic pancreatitis
- Hyperlipidaemia

KEY INSIGHTS:

1 out of 4 pets showed gastrointestinal signs in the last year²⁴

Vets claim around 25% of their dog consultations concern dermatology or allergy issues²²

ROYAL CANIN®

URINARY S/O® + HYPOALLERGENIC

URINARY S/O® + HYPOALLERGENIC dry is a complete dietetic food for cats formulated for the dissolution of struvite stones, reduce the risk of struvite stone recurrence, and for the management of ingredient and nutrient intolerances.

URINE DILUTION
Urine dilution makes the urine less liable to form crystals.

LOW RSS
A low concentration of ions helps the dissolution and limits the formation of common urinary stones.

HYDROLYSED PROTEIN
Hydrolysed protein with low molecular weight to ensure the food is hypoallergenic.

SKIN BARRIER
Formulated to support the skin's natural protective barrier for optimal skin health.

Available in 2 kg bags

DIET RECOMMENDED FOR:

Urinary disorders:

- Struvite uroliths: dissolution and management of recurrence
- Calcium oxalate uroliths: management of recurrence
- + **Dermatological/GI conditions:**
- Adverse Food Reactions (AFR)
- Feline Atopic Skin Syndrome (FASS)
- Chronic diarrhoea
- Inflammatory Bowel Disease (IBD)
- Exocrine Pancreatic Insufficiency (EPI)

KEY INSIGHTS:

Around 5% of the cat population will be affected by urinary issues²¹

Skin disease represents 20% of all cat and dog consultations in veterinary practice²⁵

ROYAL CANIN®

URINARY S/O® + SATIETY

URINARY S/O® + SATIETY dry is a complete dietetic food for cats, formulated for the dissolution of struvite stones, reduce the risk of struvite stone recurrence and for the reduction of excessive body weight.



DIET RECOMMENDED FOR:

Urinary disorders:

- Struvite uroliths: dissolution and management of recurrence
- Calcium oxalate uroliths: management of recurrence

+ Weight management:

- Overweight/obesity
- Stabilised diabetes mellitus with overweight/obesity

KEY INSIGHTS:

According to vets, urinary issues represent 36% of cat consultations²²

Approximately 1 out of 2 cats and dogs are considered to be overweight or have obesity¹⁰

ROYAL CANIN®

RENAL + HYPOALLERGENIC

RENAL + HYPOALLERGENIC dry is a complete dietetic food for cats formulated for the support of renal function in cases of chronic renal insufficiency and for the management of ingredient and nutrient intolerances.



DIET RECOMMENDED FOR:

Renal disease:

- Azotaemic Chronic Kidney Disease (IRIS stages 2 to stage 4)
- Chronic Kidney Disease with proteinuria (IRIS stages 1 to 4)

+ Dermatological/GI conditions:

- Adverse Food Reactions (AFR)
- Feline Atopic Skin Syndrome (FASS)
- Chronic diarrhoea
- Inflammatory Bowel Disease (IBD)
- Exocrine Pancreatic Insufficiency (EPI)

Other:

- Management of calcium oxalate urolith recurrence in cats with impaired renal function
- Management of recurrence of urolithiasis requiring urine alkalinisation: urate and cystine uroliths

KEY INSIGHTS:

At least 30-40% of cats over 10 years of age are estimated to be affected by CKD²⁶

Skin disease represents 20% of all cat and dog consultations in veterinary practice²⁵

URINARY S/O® + BLADDER COMFORT

URINARY S/O® + BLADDER COMFORT is a complete dietetic food for cats, formulated to dissolve struvite stones and the reduction of struvite stone recurrence, and for feline lower urinary tract disease.

BLADDER COMFORT
This diet contains a combination of nutrients to address the leading risk factors of feline lower urinary tract disease including feline idiopathic cystitis (FIC).

MODERATE CALORIE
A diet with moderate calorie content supports healthy weight maintenance which can help reduce the risk of feline lower urinary tract disease (FLUTD).

HYDRATION SUPPORT
This diet encourages cats' natural drinking behaviour, promoting urine dilution thus limiting urine saturation.

STRUVITE DISSOLUTION
Helps dissolve struvite stones.

Available in 2 kg and 4 kg bags and 85g pouch

DIET RECOMMENDED FOR:

Urinary disorders:

- Management of risk factors for Feline Lower Urinary Tract Disease: tendency to be overweight, insufficient water intake and exposure to increased environmental challenges
- Feline Idiopathic Cystitis (FIC)
- Struvite uroliths and urethral plugs: dissolution and management of recurrence
- Calcium oxalate uroliths: management of recurrence

KEY INSIGHTS:

Experiencing stressful situations are some of the most important risk factors of lower urinary tract disease²⁷

BLADDER COMFORT

MODERATE CALORIE

HYDRATION SUPPORT

STRUVITE DISSOLUTION

HEALTHY AGEING
Formulated with an exclusive blend of nutrients to support cats throughout the ageing process and help maintain renal and heart health.

Available in 2 kg bags

ROYAL CANIN® MONOFUNCTION DIETS AVAILABLE WITHIN CLINICAL ALLIANCE

Specific monofunction diets are included under the Clinical Alliance umbrella. These diets have particular technical, high quality and nutritional characteristics. They reach such a **level of technicality** that their marketing and distribution to pet owners **must be accompanied by advice, expertise and support services** in the interest of the health and well-being of their cats and dogs.

Such products are formulated to be used under the **recommendation and continuous monitoring of a veterinarian.**

ROYAL CANIN®
MONOFUNCTION

ROYAL CANIN® Monofunction diets are complete and balanced dietetic food to support cats and dogs requiring specific nutritional support.

ROYAL CANIN®

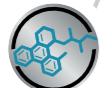
GASTROINTESTINAL® HYDROLYSED PROTEIN

GASTROINTESTINAL® HYDROLYSED PROTEIN dry is a complete dietetic food for cats, formulated to support cases of maldigestion and the management of ingredient and nutrient intolerances.



HYDROLYSED PROTEIN

Highly digestible hydrolysed (soy) protein, reducing the risk of food sensitivities that may cause recurrent gastrointestinal signs.



HIGH ENERGY

A high energy content to reduce meal volume and decrease intestinal load.



DIGESTIVE SUPPORT

A highly digestible formula with balanced fibres, including prebiotics, to support healthy digestion and transit.



Available in 400 g, 2 kg and 4 kg bags

DIET RECOMMENDED FOR:

- Inflammatory Bowel Disease (IBD)
- Exocrine Pancreatic Insufficiency (EPI)
- Adverse Food Reactions (AFR) with gastrointestinal and/or dermatological signs
- AFR - food elimination trial
- Acute and chronic diarrhoea
- Maldigestion/ Malabsorption
- Dysorexia, re-feeding after surgery
- Acute hepatopathy/hepatic lipidosis without hepatic encephalopathy

KEY INSIGHTS:

1 out of 4 pets showed gastrointestinal signs in the last year²⁴

Skin disease represents 20% of all cat and dog consultations in veterinary practice²⁵

References:
24. 2020 PET OWNER CATEGORY UNDERSTANDING: Use of Vet services, their journey, and incidence of different diseases/conditions. June 2020
25. Hill PB et al. Survey of the prevalence, diagnosis, and treatment of dermatological conditions in small animals in general practice. Vet Rec 2006;158:533-539

ROYAL CANIN®

CARDIAC

CARDIAC dry is a complete dietetic food for cats formulated for the support of heart function in cases of chronic cardiac insufficiency.



SUPPORTS HEART FUNCTION

Unique formula enriched with vitamin E, vitamin C, taurine and omega-3 fatty acids (EPA+DHA) to support heart function.



REDUCES HEART WORKLOAD

Restricted level of sodium to help support heart function in the case of chronic cardiac insufficiency.



URINARY HEALTH SUPPORT

Adapted to support the needs of neutered cats with urinary sensitivities.



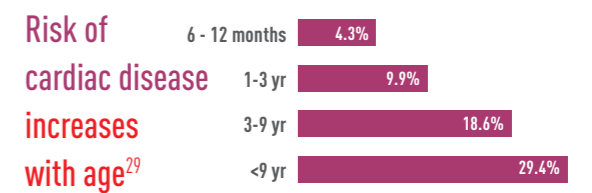
Available in 1.5 kg and 3.5 kg bags

DIET RECOMMENDED FOR:

- Hypertrophic Cardiomyopathy
- Congestive heart failure

KEY INSIGHTS:

15% of cats globally will develop Hypertrophic Cardiomyopathy²⁸, for which limited treatment options currently exist



References:
28. Fuentes V, Abbott J, Chetboul V. ACVIM consensus statement guidelines for the classification, diagnosis, and management of cardiomyopathies in cats. J Vet Intern Med. 2020 Feb; ;34:1062-1077
29. Payne JR, Brodbelt DC, Luis Fuentes V. Cardiomyopathy prevalence in 780 apparently healthy cats in rehomingcentres (the CatScan study). J Vet Cardiol. 2015 Dec;17 Suppl 1:S244-57.

HOW TO ORDER YOUR CLINICAL ALLIANCE DIETS?

ROYAL CANIN® MULTIFUNCTION & MONOFUNCTION DIETS

These diets can all be ordered through our dedicated veterinary web shop whilst your wholesaler prepares for Clinical Alliance. Once your wholesaler is up and running, you will be able to order all of your Royal Canin products through your veterinary wholesaler.



All Clinical Alliance diets can be found in the various tools found within ROYAL CANIN® Vet Services.

Vet Services supports you to:



Determine which diet is right for your patients



Calculate exactly how much to feed them



Build a weight loss programme



Predict whether cats over the age of 7 will develop azotaemic CKD within the next year.

DID YOU KNOW

You can even share your recommendations via a **bespoke letter** created by Vet Services. Once you have used any of the tools in Vet Services you can print a **summary of your advice**, giving you the confidence that your client has all the information they need to care for their pet!



If you need more information, please reach out to your ROYAL CANIN® Veterinary Business Manager.





UK

WWW.ROYALCANIN.COM/UK

NUTRITIONAL HELPLINE

0800 717800

ROI

WWW.ROYALCANIN.COM/IE

NUTRITIONAL HELPLINE

1800 936074